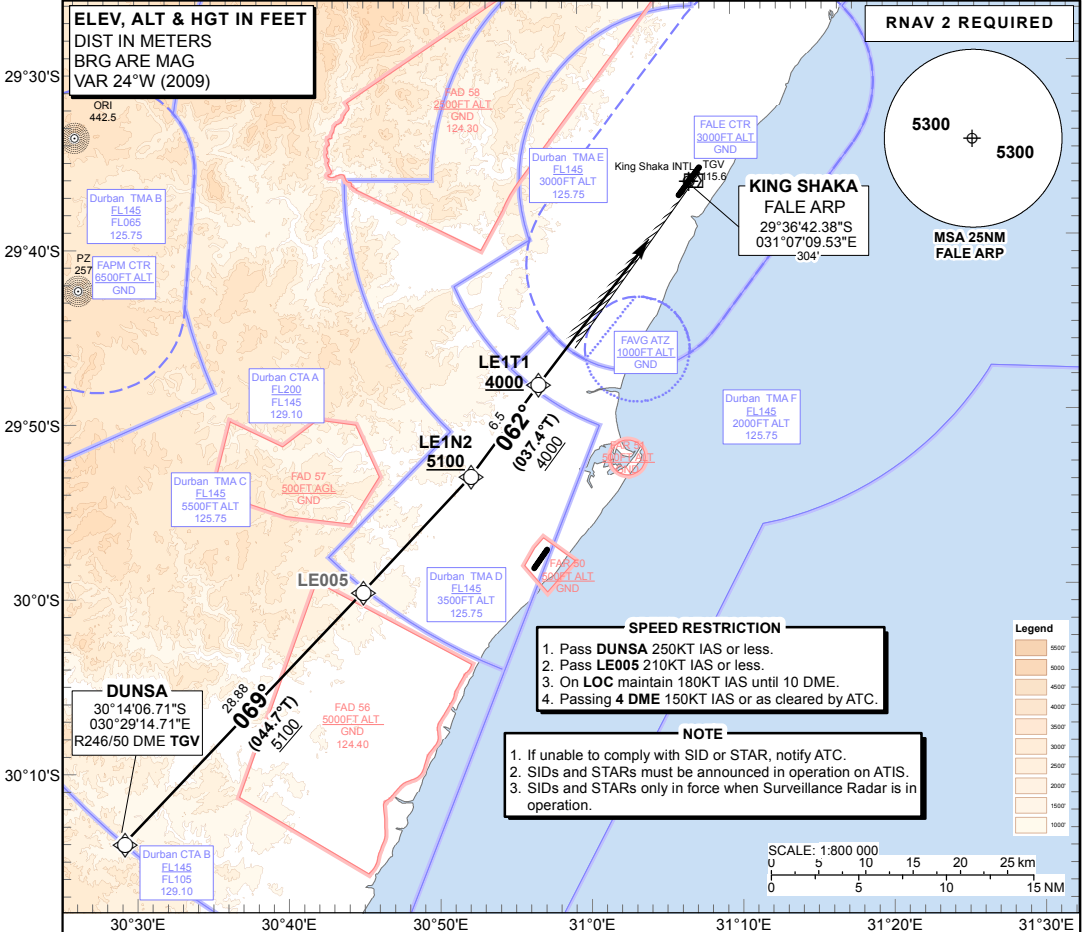


**STANDARD ARRIVAL
CHART -
INSTRUMENT
(STAR)**

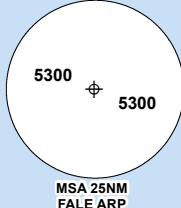
TRANSITIONAL ALTITUDE
5500'
TRANSITIONAL LEVEL
ATC

RADAR APP: 125.75
TWR: 118.45
GND: 121.65
ATIS: 127.00

DURBAN
(KING SHAKA INTERNATIONAL)
RNAV (GNSS) RWY 06
DUNSA 1A

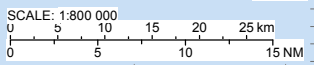
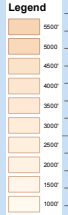


RNAV 2 REQUIRED



- SPEED RESTRICTION**
1. Pass **DUNSA** 250KT IAS or less.
 2. Pass **LE005** 210KT IAS or less.
 3. On **LOC** maintain 180KT IAS until 10 DME.
 4. Passing **4 DME** 150KT IAS or as cleared by ATC.

- NOTE**
1. If unable to comply with SID or STAR, notify ATC.
 2. SIDs and STARs must be announced in operation on ATIS.
 3. SIDs and STARs only in force when Surveillance Radar is in operation.



**DUNSA 1A:
RWY 06**

Leave **DUNSA** for **LE1N2**. At **LE1N2** turn left to **LE1T1** and intercept the ILS LOC **RWY 06**.

COMMUNICATION FAILURE PROCEDURE (Squawk 7600)

Before DUNSA: Proceed to **DUNSA** and comply with the "**After DUNSA**" Communication Failure Procedure.

After DUNSA: Continue on the **DUNSA 1A** RNAV (GNSS) STAR maintaining last assigned level. Passing **LE005** descend to **FL080**. At **LE1N2** (not below **5100'** ALT) continue to **LE1T1** (not below **4000'** ALT). Continue with the RNAV (GNSS) **RWY 06** APCH and intercept the ILS LOC **RWY 06** and land **RWY 06**.

In the event of a missed approach with the intention of diverting to an alternate aerodrome, proceed as follows:
Comply with the **ITMIL 1C** RNAV (GNSS) SID. At **ITMIL** continue to the diversion aerodrome.

CHANGE: New Format